



Sapphire

SATHORN-RAMA III

Iconic River Front Condominium

www.capitaloneth.com/sapphire



CAPITAL ONE
Real Estate

kw
KELLERWILLIAMS.
THAILAND



02 821 6793



SAPPHIRE

The ultimate riverside living experience near Bhumibol Bridge. Breathtaking river views | Unparalleled luxury | Convenient transportation. Sapphire, a luxury condominium located near Bhumibol Bridge, boasts stunning views of the river and the Bangkok skyline, offering an exceptional lifestyle that blends tranquility with urban convenience.

Comes with:

✓ Floor-to-ceiling windows offering unobstructed river views. ✓ Spacious private balcony with panoramic views of the Chao Phraya River. ✓ Premium finishing materials and smart home technology. ✓ Spacious and airy interior design maximizing natural light.

☀ World-class facilities. Experience the perfect blend of relaxation and private entertainment:

✓ Infinity pool by the river — Immerse yourself in an exceptional atmosphere with views of the city and Bhumibol Bridge. ✓ Sky Lounge & Rooftop Garden — A tranquil relaxation area on the top floor. ✓ State-of-the-art fitness center with wellness zone — Exercise with high-end equipment. ✓ Private Pier & Boat Shuttle Service — Private boat transfer service for a unique travel experience. ✓ 24-hour security system — Peace of mind with security personnel and CCTV cameras.

Project Information

Project Name:
SAPPHIRE

Project Type:
Luxury condominium by the Chao Phraya River (River View Condominium)

Location:
Located on the banks of the Chao Phraya River, near the Bhumibol Bridge, connecting to Rama III Road, Sukhumvit Road, Sathorn Road, and the Industrial Ring Road.

Project characteristics:
A modernly designed high-rise residential building offering panoramic views of the Chao Phraya River.

Project concept:
An elevated riverside lifestyle blending luxury, tranquility, and convenient access.

Building Information

- Number of buildings: 1 building
- Number of floors: 43 floors
- Number of units: 437 rooms
- Passenger elevators: 4 high-speed elevators.
- Parking: 60%

Room Types (Unit Types)

- 1 bedroom, 34.70 - 43.40 square meters
- 2 bedrooms, 52.80 - 61.50 square meters
- Duplex 57.27 - 133 square meters
- Penthouse 115 - 323 square meters

Index



[Facilities](#)

[Exterior](#)

[Interior](#)

[1 bedroom show unit](#)

[Duplex Show unit](#)

[2 bedroom show unit](#)

[Floor Plan](#)

[Unit Plan](#)

[actual view](#)



Chaopraya River Front View on main Rama III road

Floor to ceiling 2.7 M

Fully Fitted - Built in pantry and kitchen include air con

Connect to BRT and Future BTS Grey line

duplex units have a ceiling height of 5.9 m.



Sapphire Luxurious Condominium Rama 3 Iconic Riverfront Condominium This is a 44-story High Rise condo on Rama 3 Road with a stunning view of the Chao Phraya River.

The hallmark feature is the blue peak of the building, which catches the eye and certainly makes a dazzling impression. This brand new building project is located near Bhumibol Bridge (Industrial Ring Road), equipped with diverse types of leisure facilities.

There are 3 types of room classification, including 1 Bedroom and 2 Bedroom units. There is also the duplex type and its ceiling height is 5.9 m.1 Bedroom unit size starts from 33.8 sq.m.



FACILITIES

เพื่อเพิ่มพื้นที่ใช้สอยส่วนกลางให้ครบครัน
และสิ่งอำนวยความสะดวกให้คุณได้มี
ไลฟ์สไตล์อย่างที่คุณต้องการ

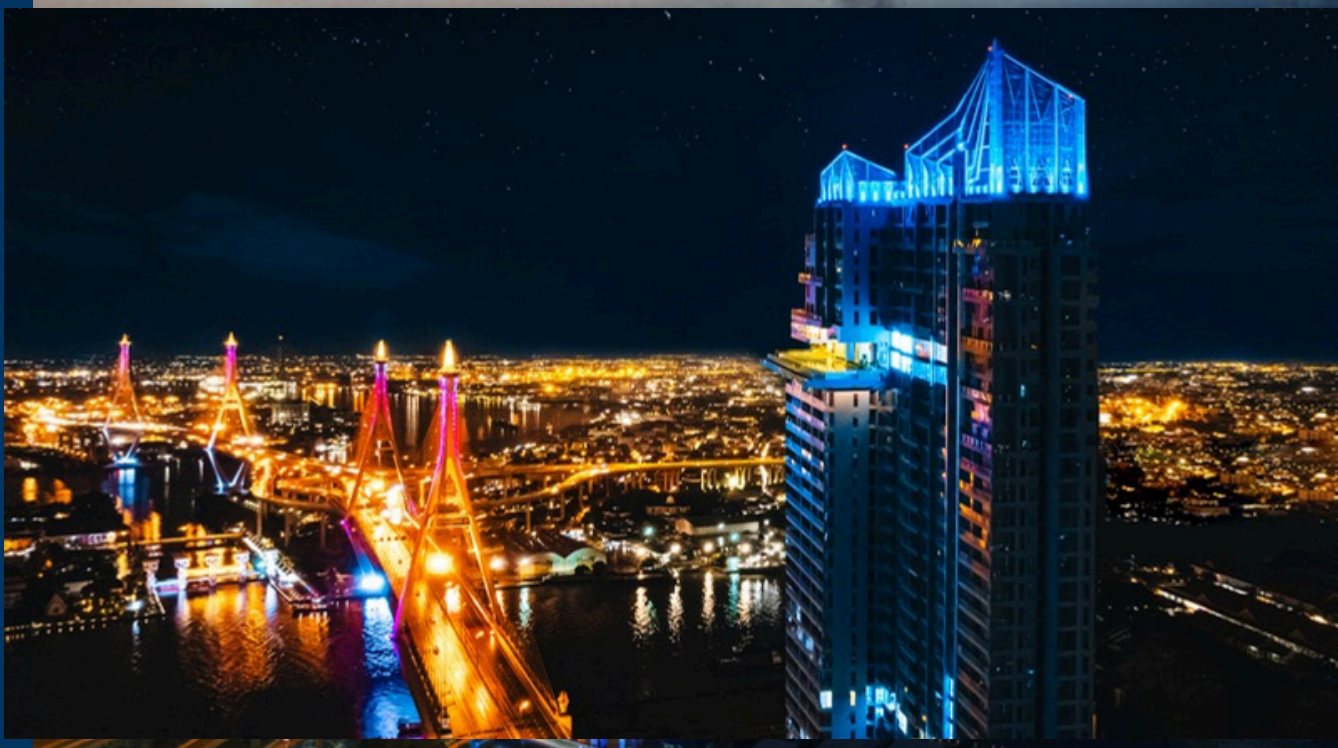
- Automatic Parking
- Putting Green
- Golf simulator
- Swimming Pool
- Fitness
- Sky lounge
- Library
- Kids room
- Yoga room
- Boxing room
- Sauna
- Meeting room
- Rooftop garden

Facilities



Your Signature

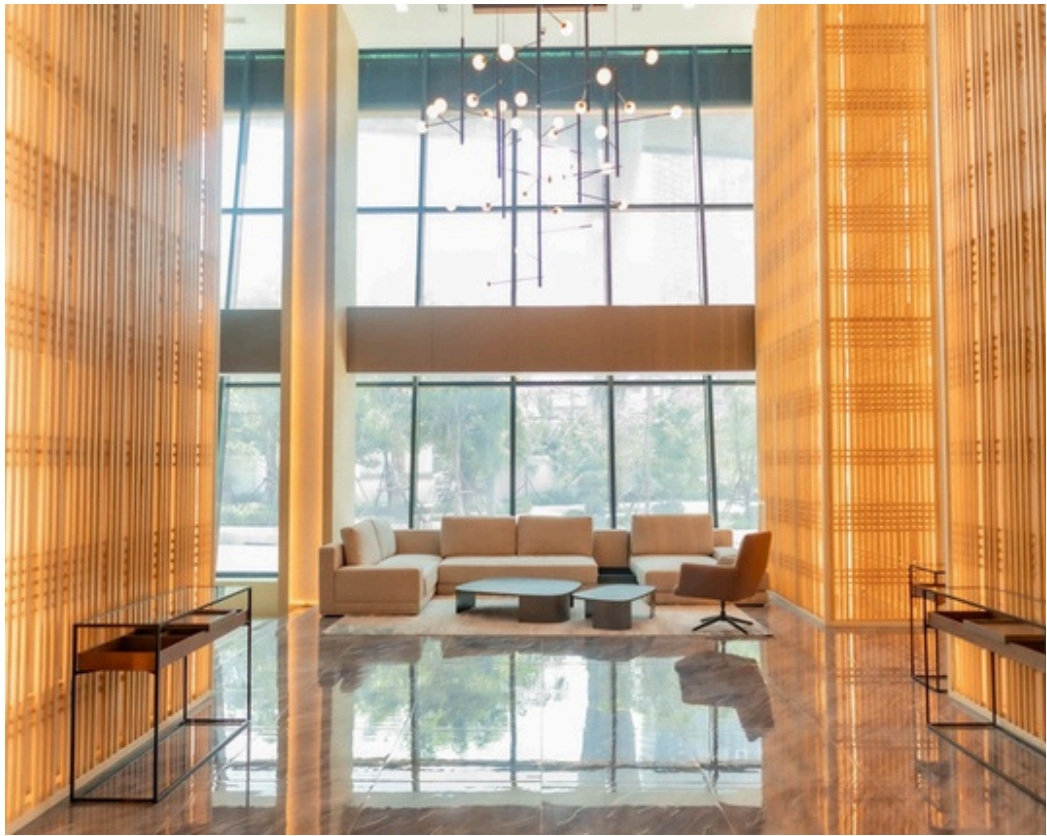
Residence



Luxury
exterior
Design



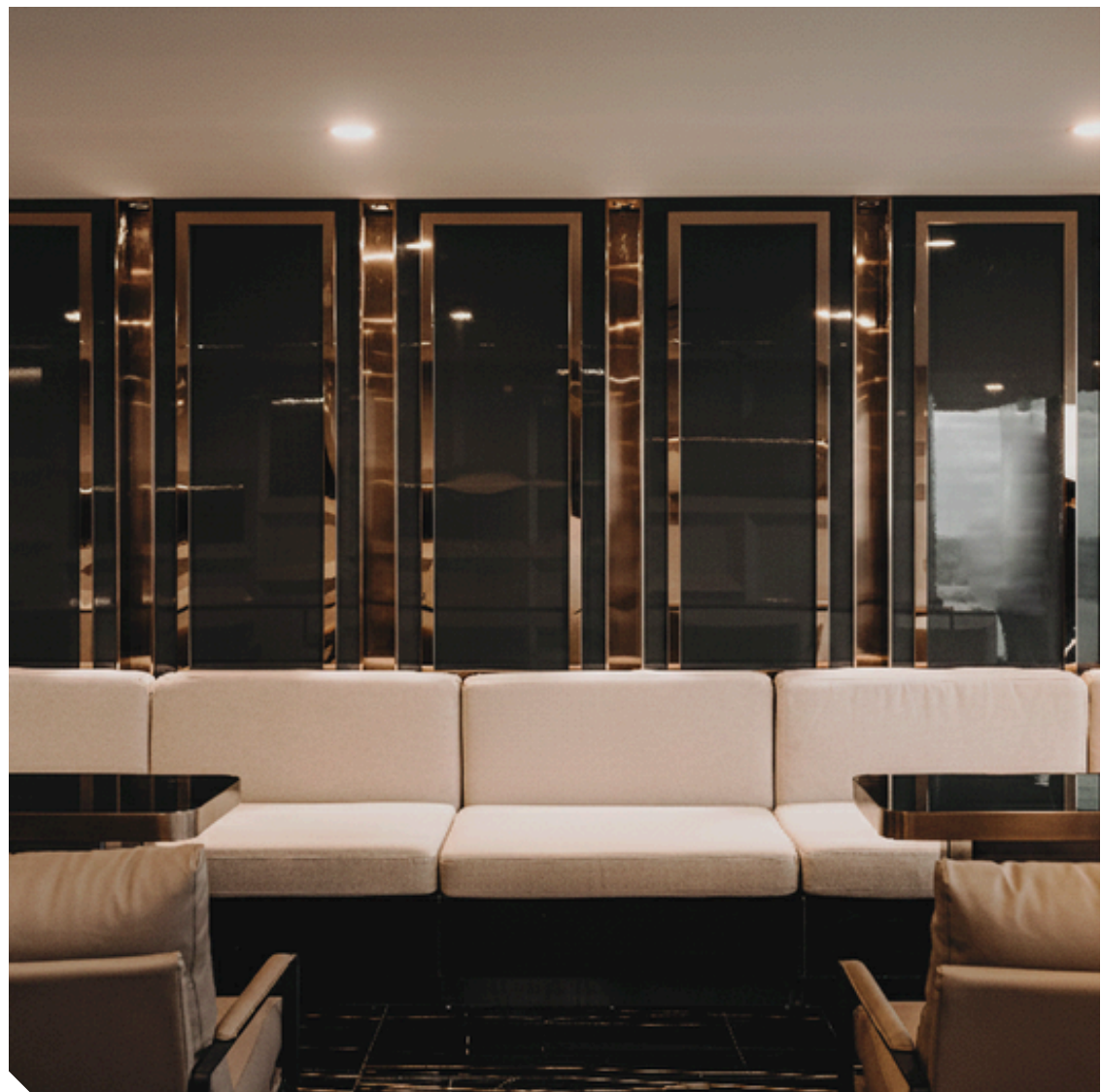
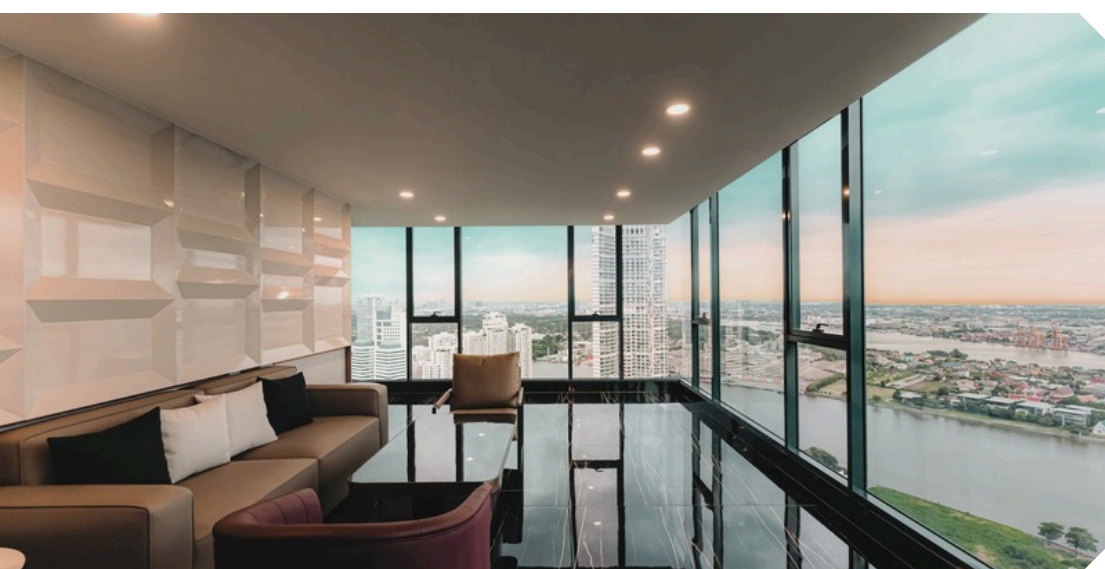
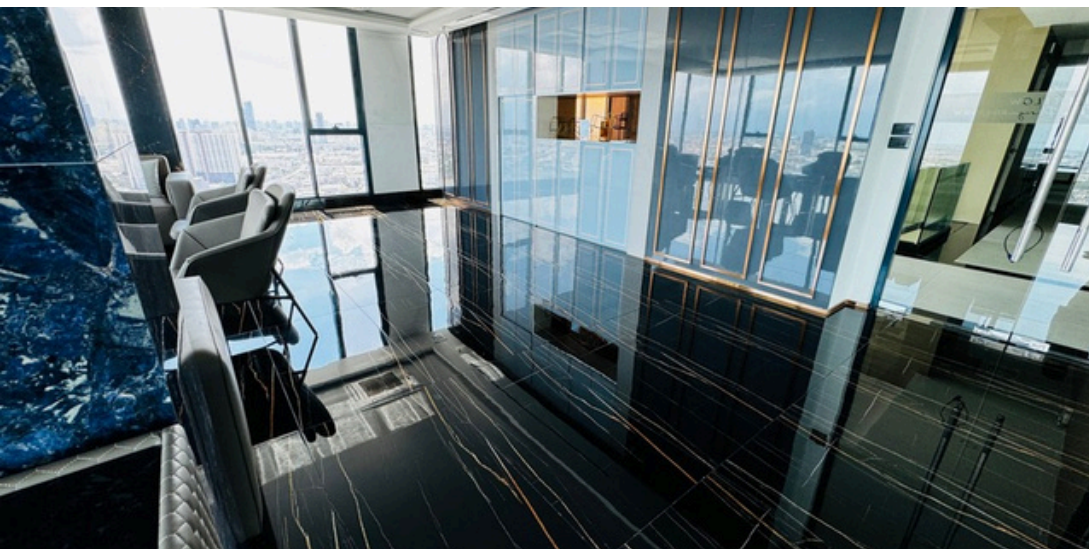
LOBBY



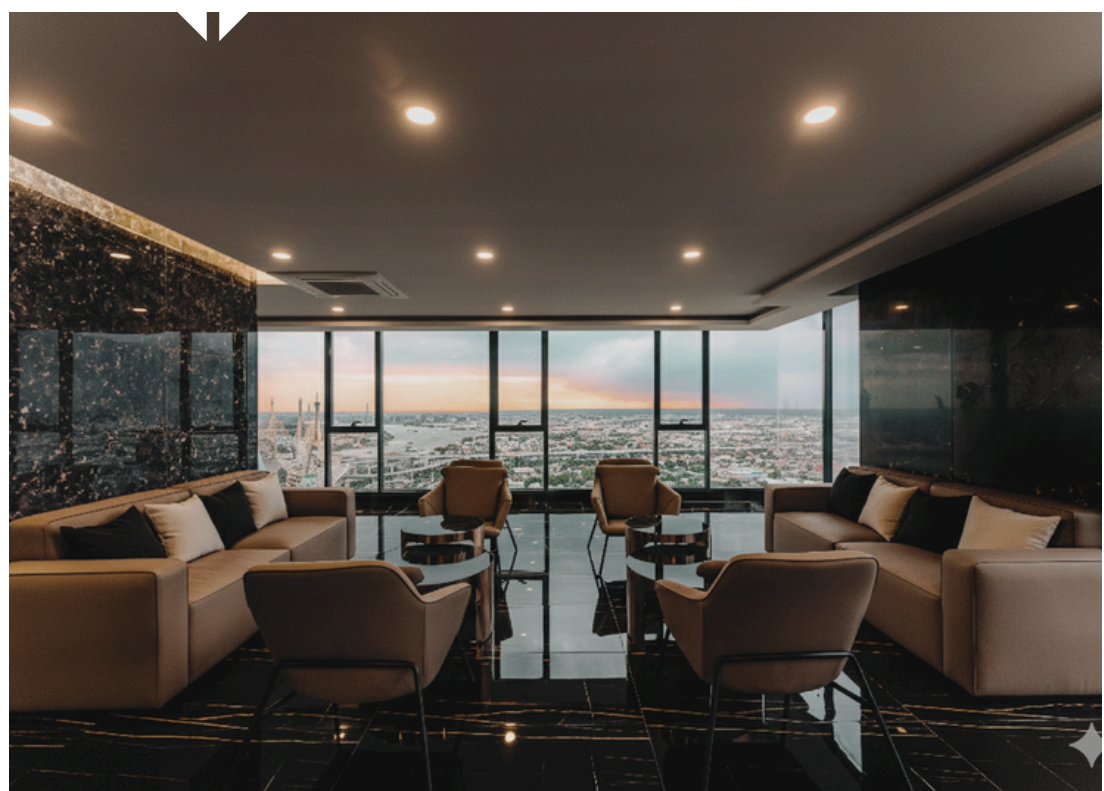
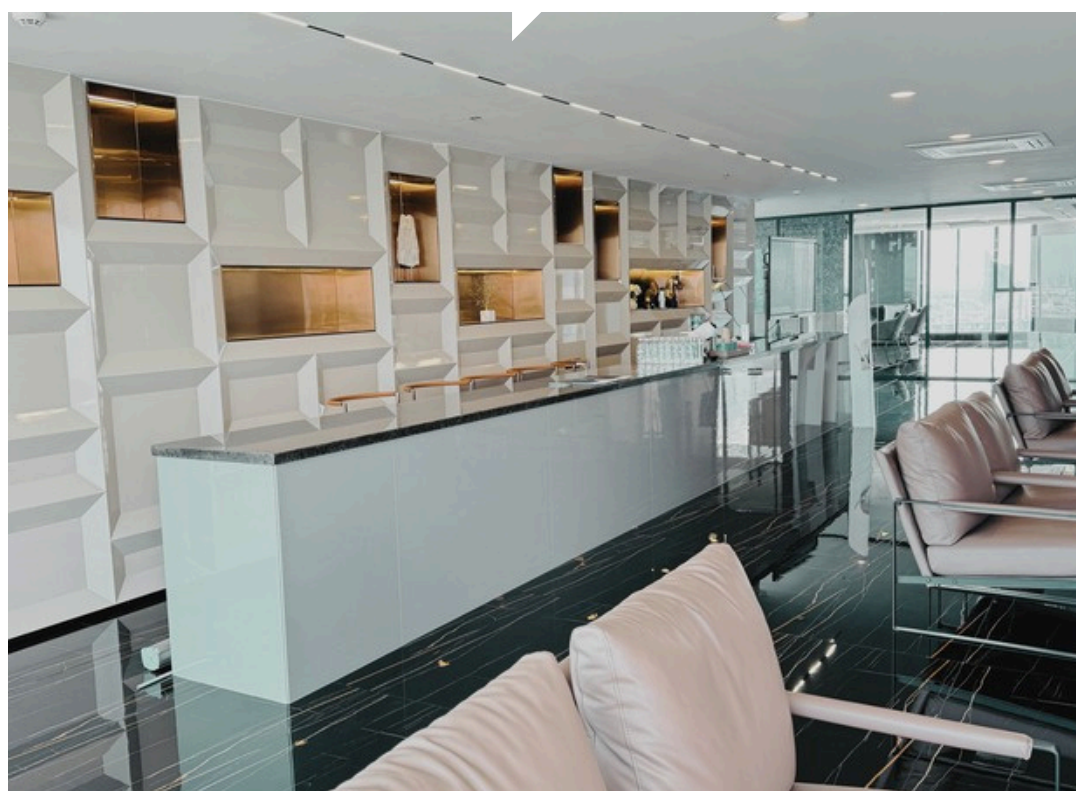


MINI GOLF AND SIMULATOR 7TH FLOOR

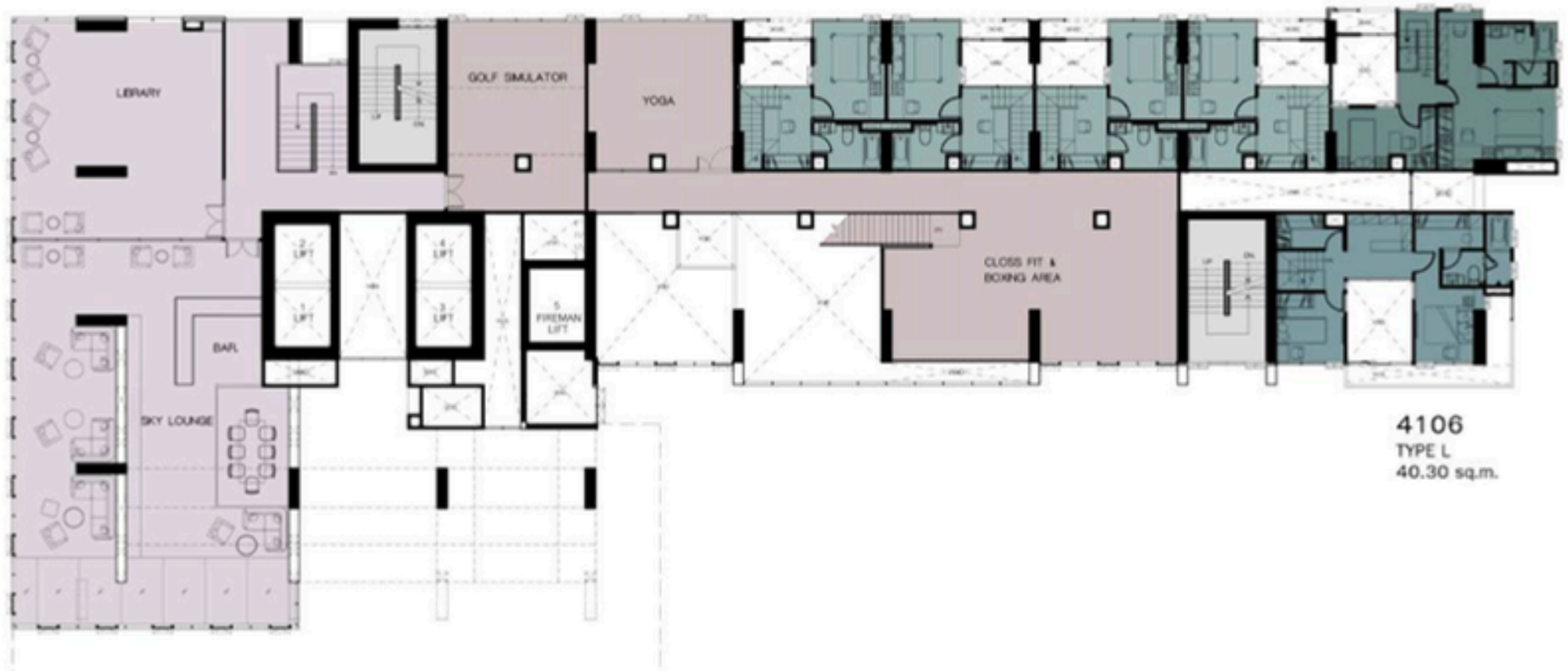




EXECUTIVE
LOUNGE 41ST
FLOOR



TRIPLE FACILITIES



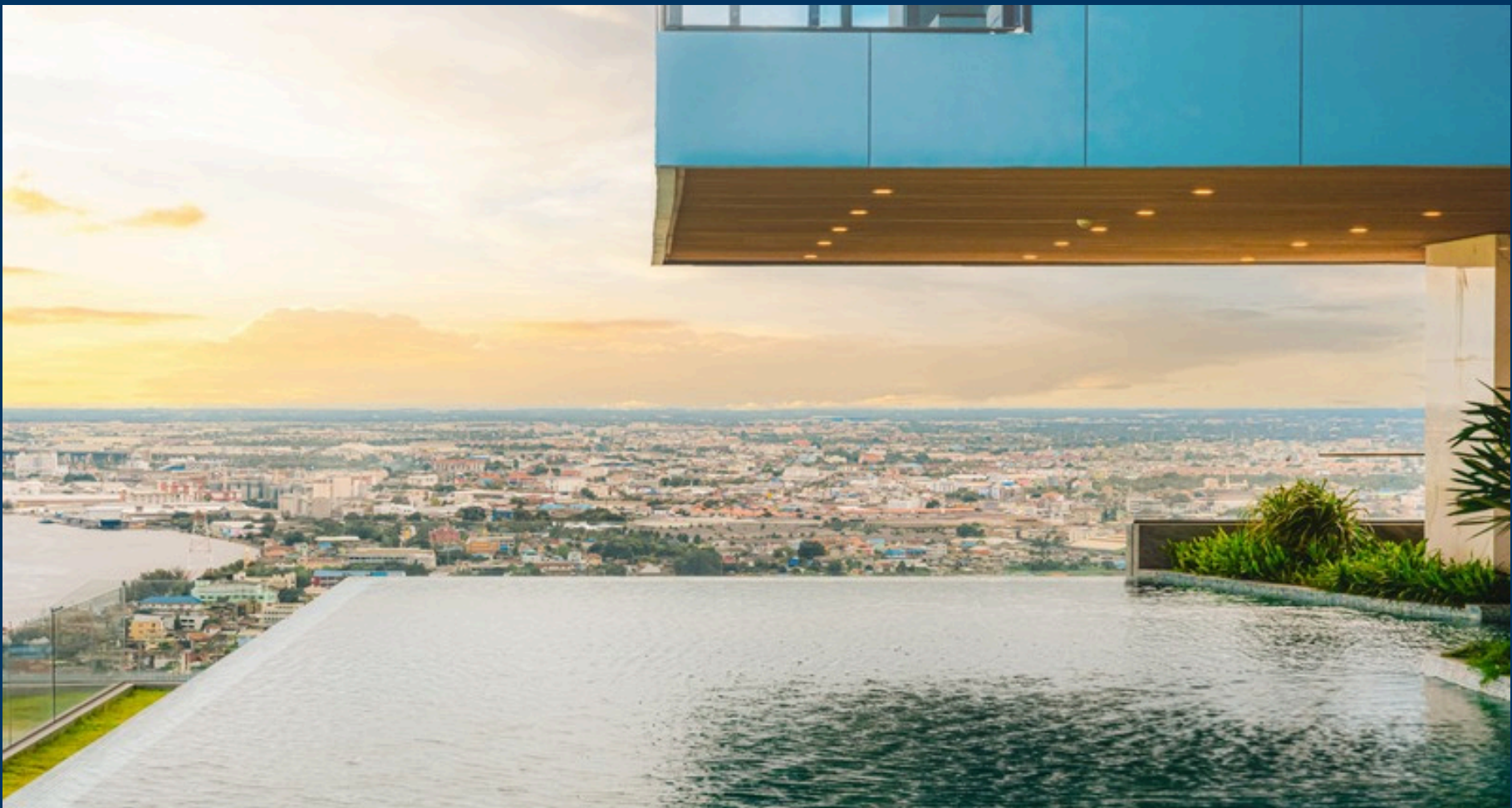


STATE OF THE ART FITNESS 41ST M FLOOR





INFINITY EDGE POOL 41ST M FLOOR





8-21 Floor Plan





24th -39th Floor Plan





41 th Floor Plan
Main Facilities



42nd Floor Plan



42nd Upper Floor Plan





43rd Floor Plan



43rd upper Floor Plan



44th Floor Plan

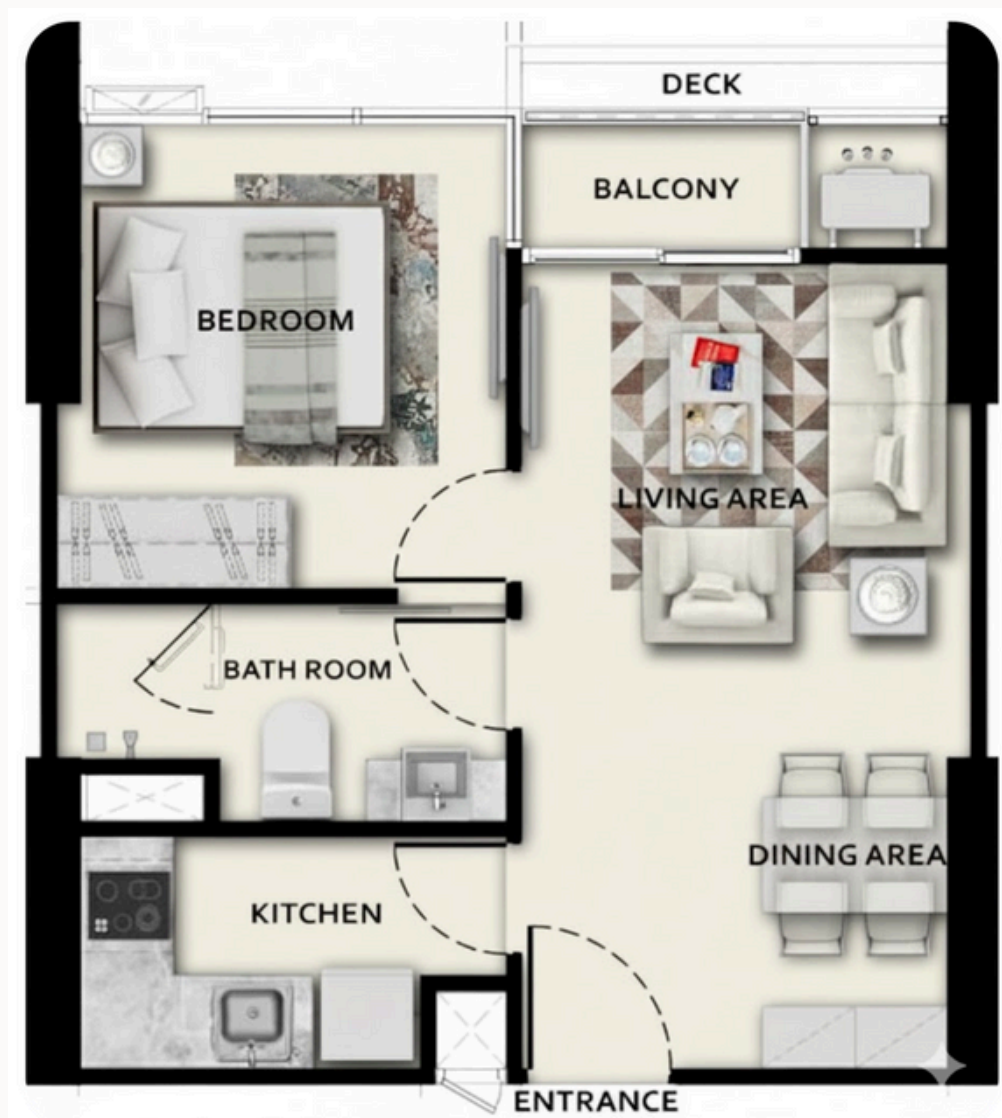




44th upper Floor Plan



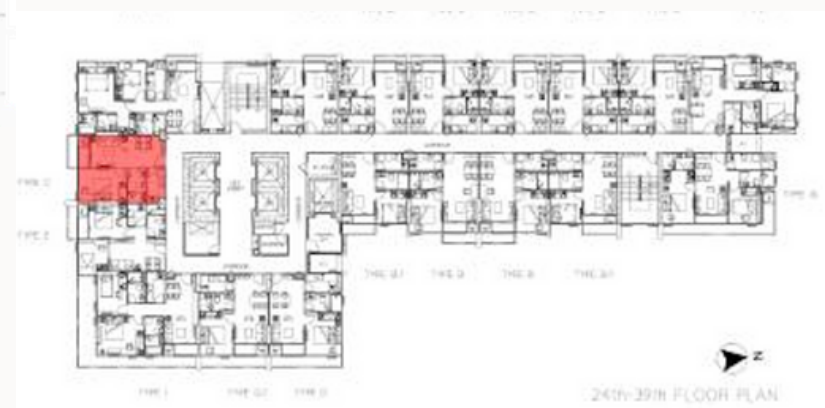
Type A 34.50 Sq.m. 1 bedroom



TypeB 40.50 Sq.m. 1 bedroom



Type C 42.30 Sq.m. 1 bedroom



Type E 43.40 Sq.m. 1 bedroom



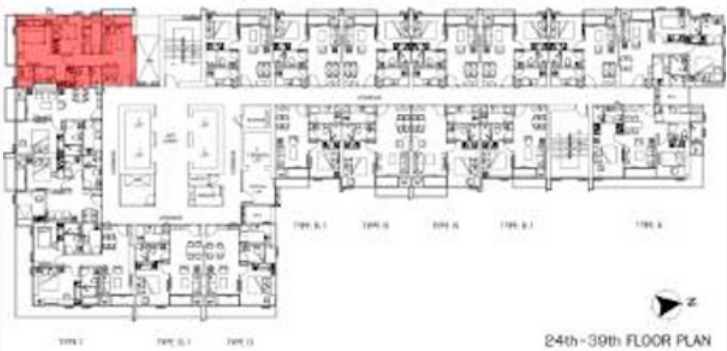
Type F 53.20 Sq.m. 2 bedroom



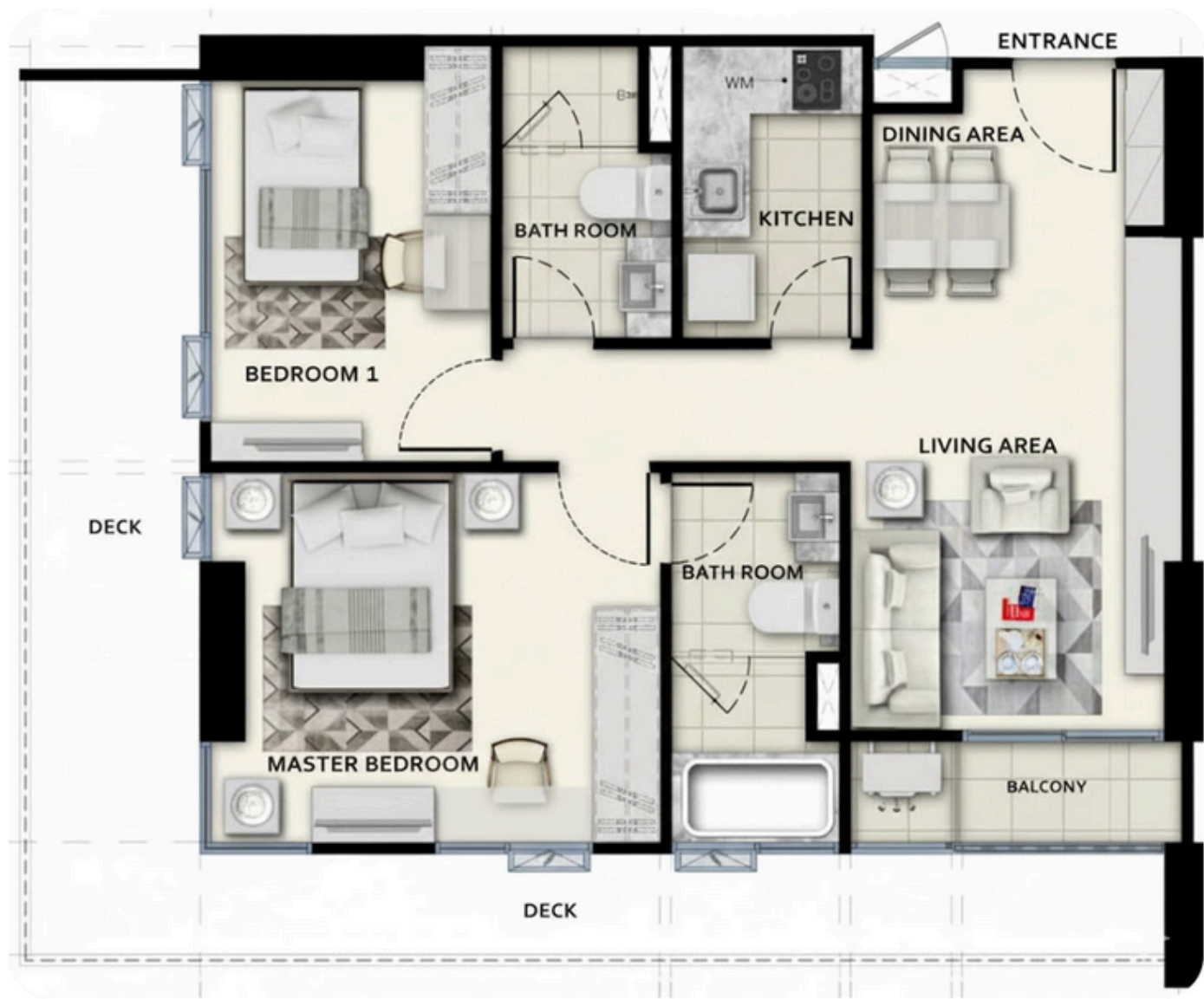
Type G 52.80 Sq.m. 2 bedroom



Type H 61.50 Sq.m. 2 bedroom



Type I 58.80 Sq.m. 2 bedroom



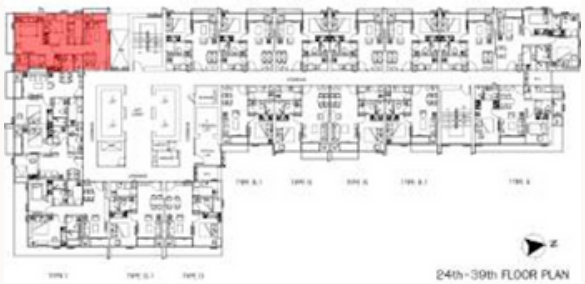
Type H1 63.44 + 59.10 Sq.m. Duplex 3 bedroom



Lower



Upper



Type J1 34.74 + 22.50 Sq.m. Duplex 2 bedroom



Lower



Upper



Type K1 36.17 + 23.60 Sq.m. Duplex 2 bedroom



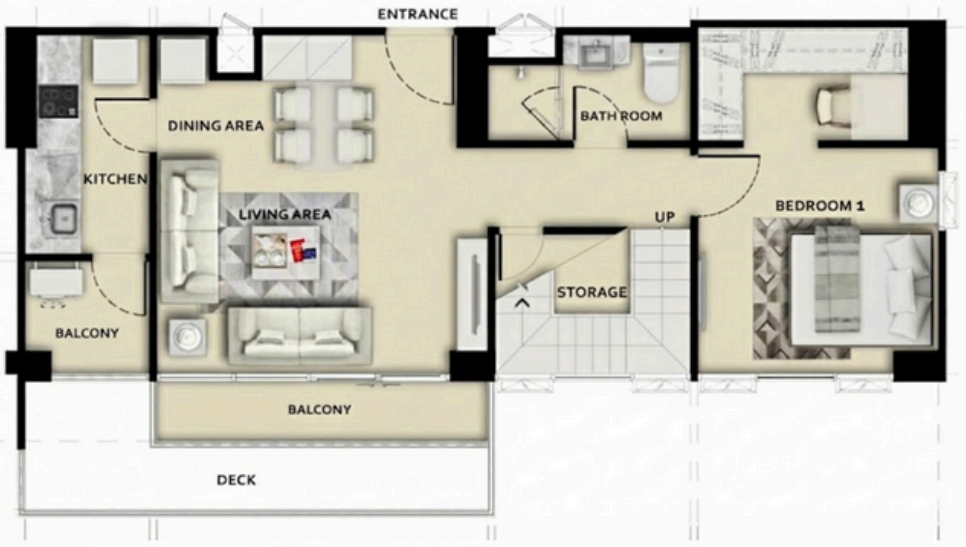
Lower



Upper



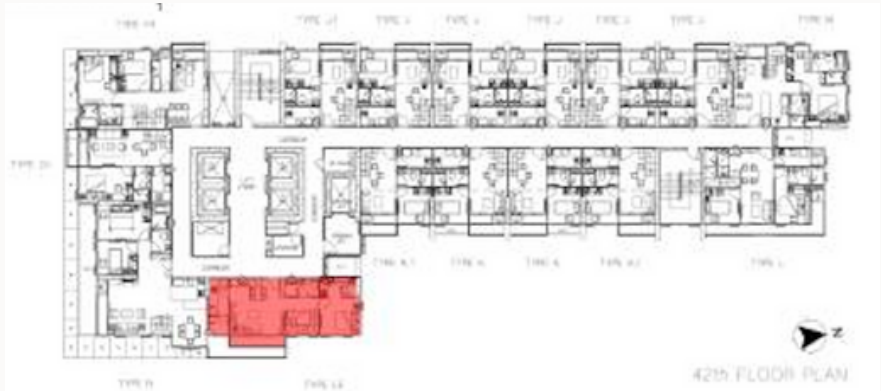
Type I.3 57.56 + 42.00 Sq.m. Duplex 3 bedroom



Lower



Upper



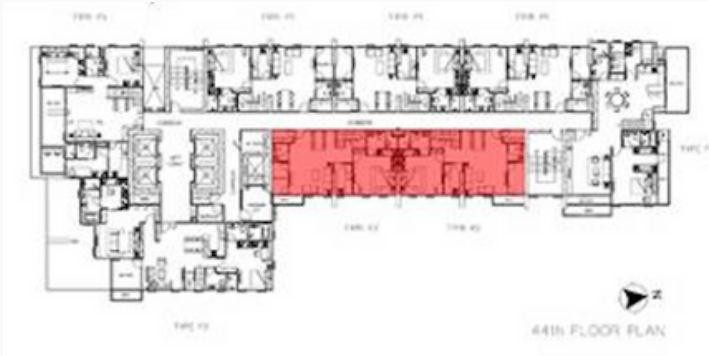
Type P2 71.44 + 62.20 Sq.m. Duplex 3 bedroom



Lower



Upper



Type Z1/X2 114 Sq.m. Penthouse 3 bedroom



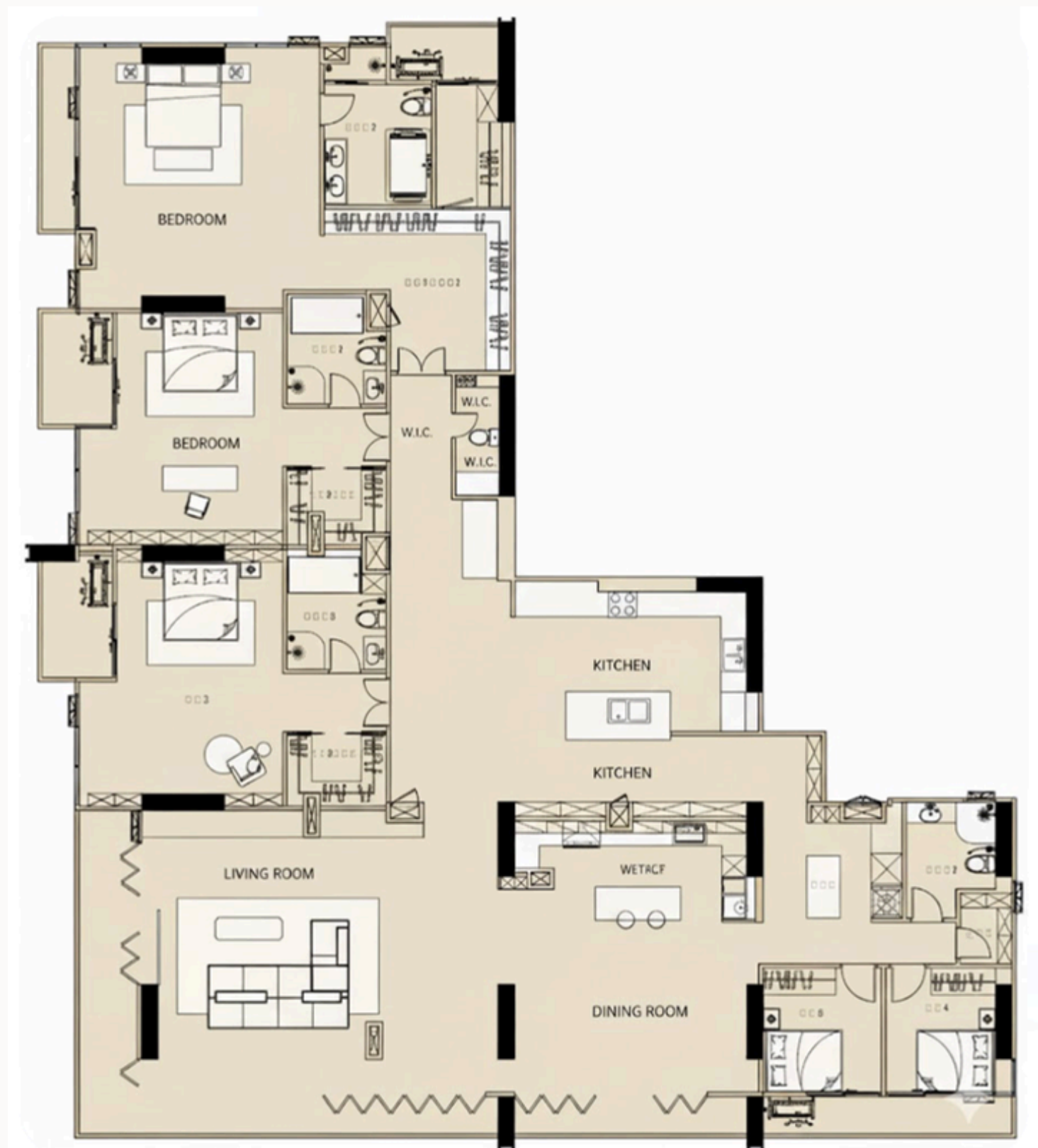
Type P2 206.22 Sq.m. Penthouse 3 bedroom



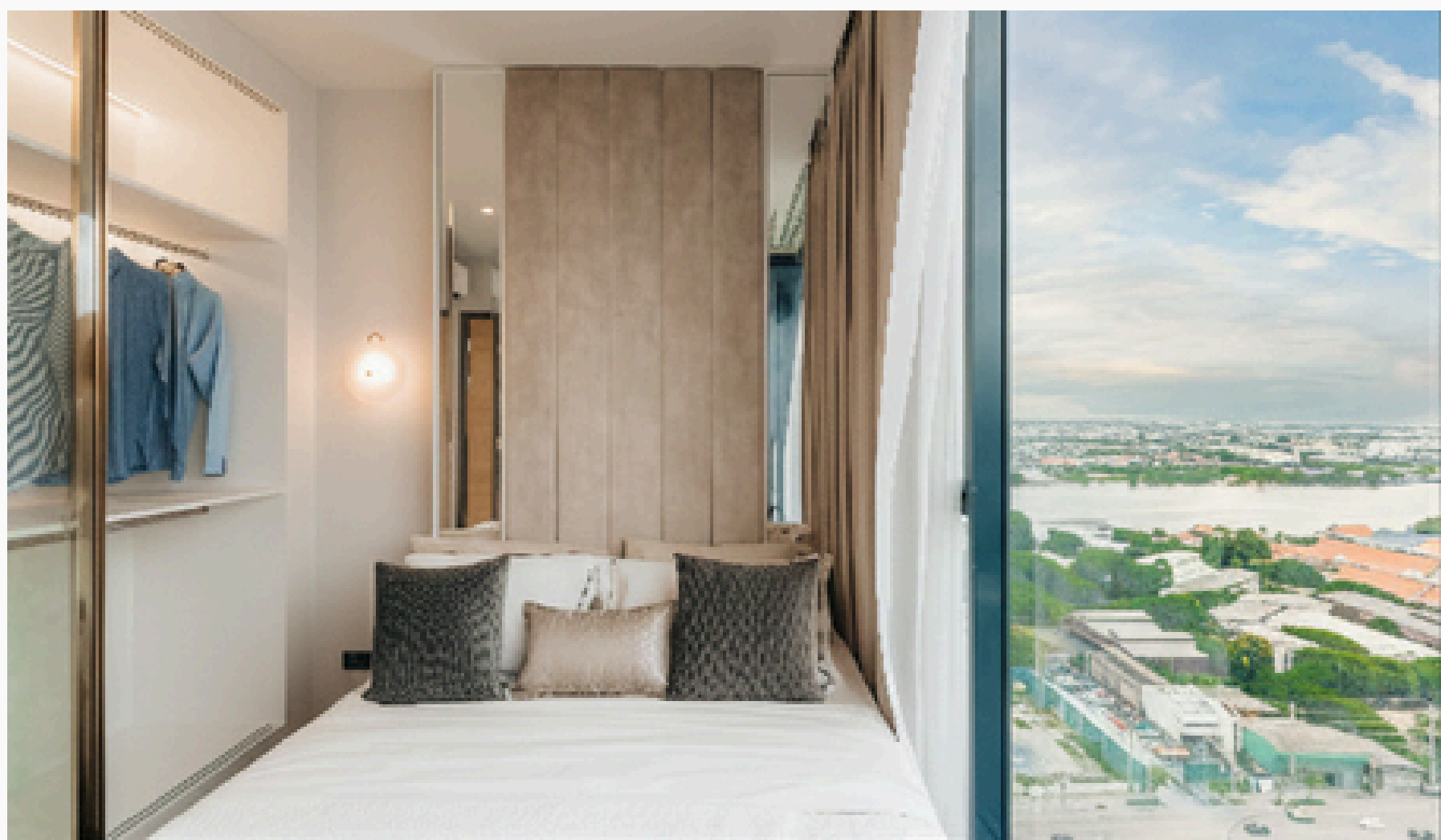
Type Z3/X4 176 Sq.m. Penthouse 3 bedroom



Type Z5/X5 323 Sq.m. Penthouse 5 bedroom



1 bedroom 35 Sq.m.





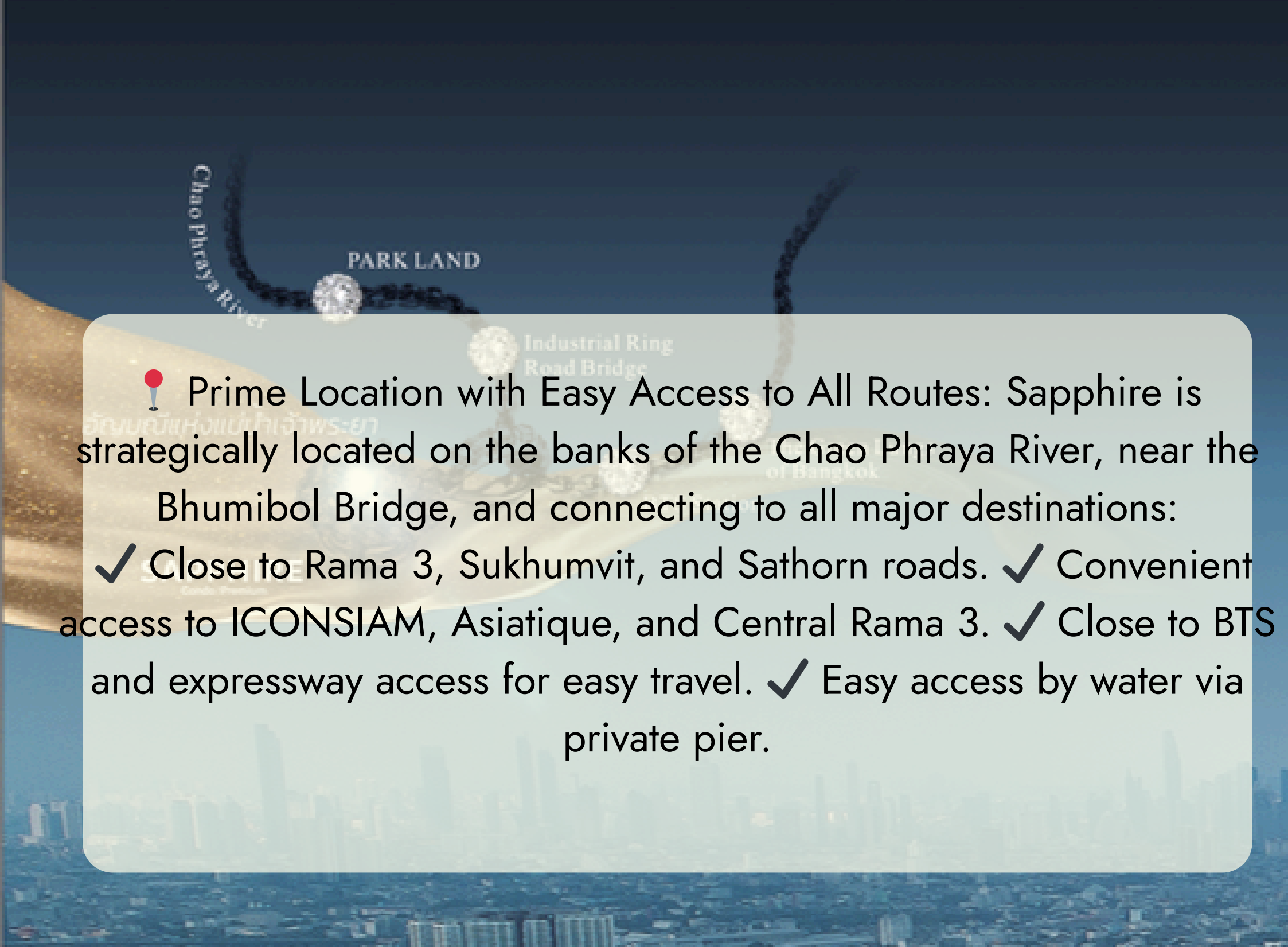
2 bedroom 54 Sq.m.





Duplex





📍 Prime Location with Easy Access to All Routes: Sapphire is strategically located on the banks of the Chao Phraya River, near the Bhumibol Bridge, and connecting to all major destinations:

- ✓ Close to Rama 3, Sukhumvit, and Sathorn roads.
- ✓ Convenient access to ICONSIAM, Asiatique, and Central Rama 3.
- ✓ Close to BTS and expressway access for easy travel.
- ✓ Easy access by water via private pier.





View from the 41st floor facility.



View from the 18th floor.



